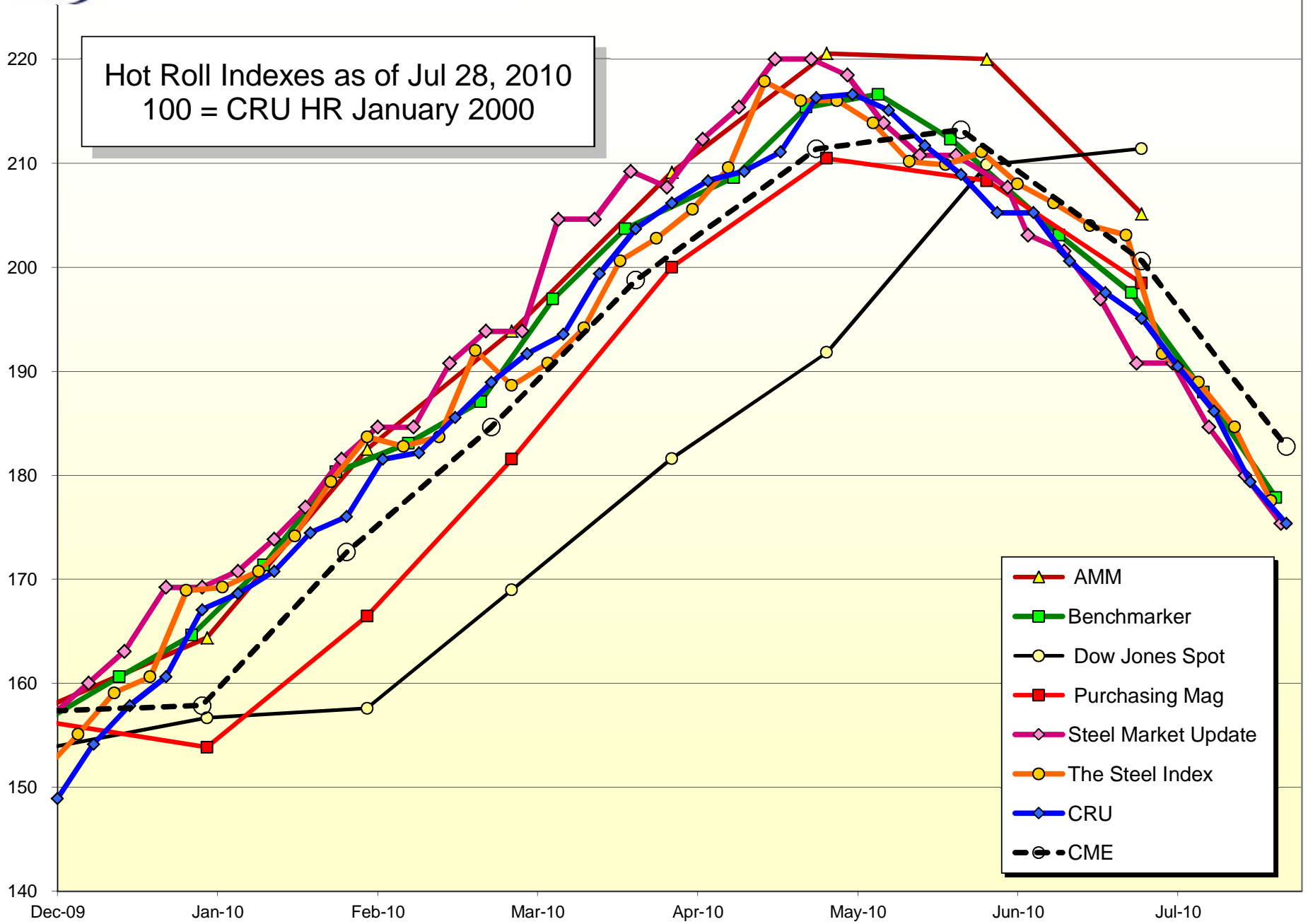




Birmingham Futures

Hot Roll Indexes as of Jul 28, 2010
100 = CRU HR January 2000



- AMM
- Benchmarker
- Dow Jones Spot
- Purchasing Mag
- Steel Market Update
- The Steel Index
- CRU
- CME



Birmingham Futures

Cold Roll Indexes as of Jul 28, 2010
100 = CRU CR January 2000

